

# ADVANCED MICROSCOPES

## MODEL CS SERIES

Carton advanced microscope Model CS series is the best choice for every applications owing to its excellent optics, reliable mechanism and versatility, designed for use by students in schools, colleges, universities and professionals and specialists in the fields of medical, veterinary and scientific research. The CS offers more performance and value than expected.

### General Features

#### ◆ Viewing Head:

360° Rotatable Siedentopf binocular head with 30° inclined eyepiece tubes. Large interpupillary distance adjustable from 48mm through 75mm. A diopter adjustment ring is provided on the left eyepiece tube.

#### ◆ Eyepieces:

Wide Field 10x Eyepiece, F.N. 18, Eyepoint 18, with retainer ring for attachment of reticle.

#### ◆ Objectives:

DIN Achromat, Semi Plan, Plan, Plan Phase objectives or Infinity-corrected Plan objectives selectable.

#### ◆ Revolving Nosepiece

Inward-facing (reversed) Quadruple Nosepiece on ball bearing mount with click-stop mechanism for small and accurate operation. Quintuple nosepiece is also available as option.

#### ◆ Focusing:

Coaxial coarse and fine focusing adjustment with tension control ring and up-stopper to prevent accidental breakage of slide. 25mm coarse focusing range with 0.002mm fine focusing increments.

#### ◆ Stage:

Large mechanical stage 141mm x 131mm, double plate layered, travelling through 76mm x 51mm with coaxial drive control on left hand. Right hand drive is also available as option. Two slides can be held at a time for comparison viewing.

#### ◆ Stage Condenser:

Abbe type N.A. 1.25 condenser with iris diaphragm and swing-out filter holder, focusable by rack and pinion.

#### ◆ Illuminator:

6V 20W halogen lamp or 3W LED with intensity control

#### ◆ Packing:

Styrofoam container.



CSB-10

# ADVANCED MICROSCOPES

## MODEL CS SERIES

### Optional Accessories

#### Heads:

CS-MH	Monocular head without eyepiece
CS-BH	Binocular head without eyepiece
CS-MH	Trinocular head, Siedentopf type, w/photo tube and C mount tube

#### Eyepieces:

M9261-103	Extra Wide Field 10x FN20 (pair)
M9261-150	Wide Field 15x (pair)
M9261-299	Wide Field 20x(pair)

#### Objective sets:

CDA520	DIN Semi-plan achromat 4x,10x, 40xR(sealed), 100xR oil
CDA530	DIN Plan 4x, 10x, 40xR(sealed), 100xR oil

#### Miscellaneous:

M9260-1	Phase contrast accessory with achro phase 10x, 20x, 100xR oil & Plan phase 40xR, phase turret condenser, centering telescope, green filter, driver in aluminum case
CDA550	Phase contrast accessory with Plan phase 10x, 20x, 40xR, 100xR oil, phase turret condenser, centering telescope, green filter, driver in aluminum case
CDA551	Dark field condenser with Plan objective 100x with iris diaphragm
M9260-2	Simple polarizing set

### Specifications

Model	Head	Eyepieces	Objectives	Condenser	Stage	Illuminator
<b>CSB-10</b>	Siedentopf binocular	WF10x FN18	DIN Achromat 4x,10x,40xR,100XR Oil	NA1.25 Abbe, Rack & Pinion	Mechanical stage	6V20W halogen with Dimmer
<b>CSB-10-LED</b>	Same as CSB-10 but with 3W LED with dimmer					
<b>CSB-10SP</b>	Siedentopf binocular	WF10X FN18	DIN Semi Plan Achro 4x,10x,40xR(sealed), 100xR Oil	NA1.25 Abbe, Rack & Pinion	Mechanical stage	6V20W halogen with Dimmer
<b>CSB-10SP-LED</b>	Same as CSB-10SP but with 3W LED with dimmer					
<b>CSB-10PH</b>	Siedentopf binocular	WF10X FN18	DIN Phase 10x, 20x,40xR(sealed), 100xR Oil	NA1.25 Abbe, Rack & Pinion	Mechanical stage	6V20W halogen with Dimmer
<b>CSB-10PH-LED</b>	Same as CSB-10PH but with 3W LED with dimmer					
<b>CST-10</b>	Same as CSB-10, but with Trinocular head					
<b>CST-10-LED</b>	Same as CSB-10-LED but with Trinocular head					
<b>CST-10SP</b>	Same as CSB-10SP, but with Trinocular head					
<b>CST-10SP-LED</b>	Same as CSB-10PH-LED, but with Trinocular head					
<b>CST-10PH</b>	Same as CSB-10PH, but with Trinocular head					
<b>CST-10PH-LED</b>	Same as CSB-10PH-LED, but with Trinocular head					

Notice: Carton Optical reserves the right to make changes in design without notice or obligation.

### Carton Optical Industries, Ltd.

27-11, Higashi Ueno 1-chome, Taito-ku, Tokyo 110-0015, JAPAN  
 TEL: (03) 3832-1320 FAX: (03) 3832-3400  
 E-mail: im-ex@carton-opt.co.jp <http://www.carton-opt.co.jp>

# OPTIONAL ACCESSORIES

## Digital Camera Adapters



**Z1018**  
Adapter for  
compact cameras



**DG**  
Adapter for  
SLR cameras  
(requires camera-  
specific T-mount  
adapter)

DG

### T-Mount Adapters

**T-NIKON**  
**T-PENTAX/K**  
**T-SONY**  
**T-CANON/EOS**

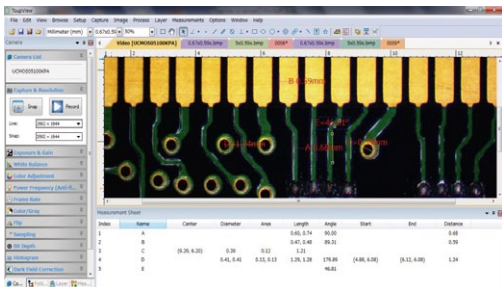


## USB/Digital Cameras

The **VD-PC5** and the **HDCE-X5** cameras with Image processing and measurement software which can easily convert a conventional microscope into "Digital Microscope" capable of processing, measuring and saving images.



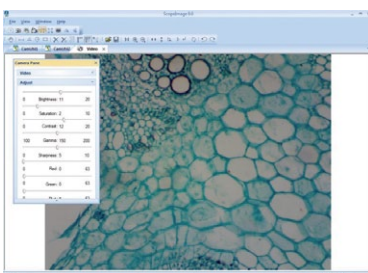
VD-PC5 Package



<b>Model</b>	<b>VD-PC5</b> (code: UCMOS05100KPA)
Image Sensor	1/2.5" CMOS
Resolution / Max Frame Rate	2592x1944 5 fps
	1280x960 18 fps 640x480 60 fps
Exposure	Auto/Manual
White Balance	Auto/Manual
Mount Type	C mount, 23.2mm dia. relay lens & 30mm dia. and 30.5mm dia. eyepiece sleeve adapters
Interface	USB2.0
Application	"ToupView" Video/Image Processing & Measurement Software
Measurement Tools	Angle, Point, Line, Parallel, Two Parallels, Vertical, Rectangle, RoundRect, Ellipse, Circle, Annulus, Two Circles, Arc, Polygon
OS	Windows XP / Vista / 7 / 8 (32 & 64 bit), Mac OS X, Linux



HDCE-X5



<b>Model</b>	<b>HDCE-X5</b>
Image Sensor	1/2.5" CMOS
Resolution / Max Frame Rate	2592~1944 2.5 fps
	1024~768 10 fps
Exposure	Auto/Manual
White Balance	Auto/Manual
Mount Type	C mount with 23.2mm dia. relay lens & 30mm dia. eyepiece sleeve adapter
Interface	USB2.0
Application	"ScopImage9.0" Image Process & Measurement Software
Measurement Tools	Line, Angle, Circle, Rectangle, Polygon
OS	Windows 2000/XP/Vista/Win 7 32bit or 64bit